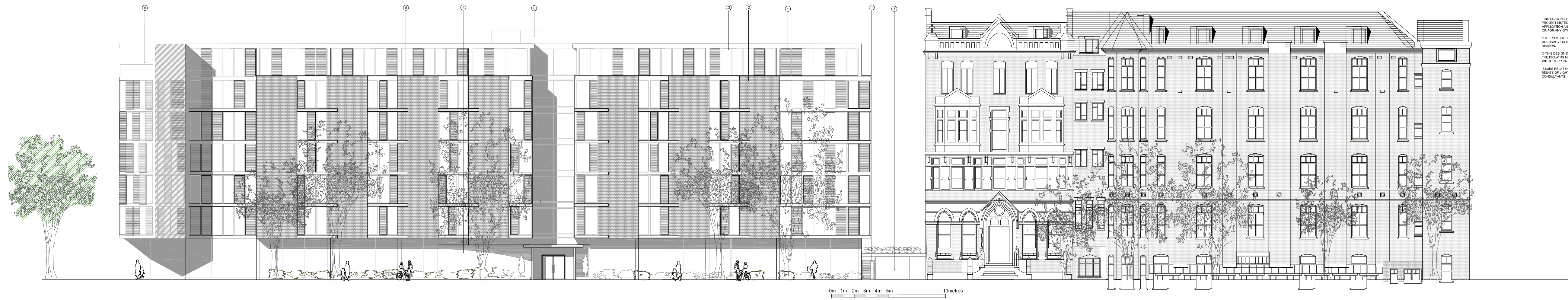




- Materials:
1. Rosewood timber panel
 2. Brick cladding, London stock
 3. Powder coated grey aluminium frame
 4. Render
 5. Steel section with light box plaster bed
 6. Open sided balcony
 7. Powder coated grey aluminium framed glazing



THIS DRAWING HAS BEEN PREPARED SOLELY FOR THE CLIENT AND PROJECT LISTED HEREAFTER AND IS SUBMITTED AS PART OF A PLANNING APPLICATION AND NOT BE REPRODUCED OR USED IN ANY OTHER MANNER OR FOR ANY OTHER PURPOSE.

CLIENTS MUST VERIFY THEMSELVES WITH RESPECT TO THE ACCURACY OR SUITABILITY OF THE DRAWINGS OR FOR ANY OTHER REASON.

© THIS DESIGN IS THE COPYRIGHT OF NEALE & NORDEN LTD. THE DRAWING MUST NOT BE REPRODUCED IN PART OR IN WHOLE WITHOUT PRIOR PERMISSION.

ISSUE WILL APPLY TO PROVISIONAL STRUCTURES, PARTY WALLS & RIGHTS OF LIGHT TO BE FULLY EVALUATED BY SPECIALIST CONSULTANTS.

KINGSLAND ROAD ELEVATION 1:200



KINGSLAND ROAD ELEVATION 1:100

K I N G S L A N D R O A D

KINGSLAND ROAD ELEVATION

Revision A: 28th July, Theatre workshop amended; D/A access incorporated to the design.